


# *Feel* *You'll* *the* *Difference*



Many water supplies contain hardness minerals (calcium and magnesium), iron, rust, and sediment. These minerals form a scale and create problems in water heaters, washing machines, dishwashers, coffee makers, humidifiers and plumbing systems. Nelsen water conditioners and drinking water systems are designed to reduce these unwanted contaminants providing your family with a refreshing difference, saving you money now and in the years ahead.



**NelsenWater™**  
Treatment Solutions

*2510 Series Softeners and Filters*



# Benefits of a Nelsen Water Treatment System



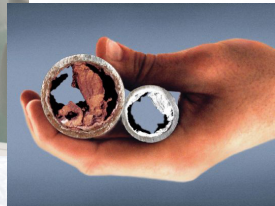
***In the Bathroom:*** Your soap and shampoo will lather better. Your hair and skin will feel noticeably cleaner, softer and not as dry. Additionally, there will be no soap scum or mineral deposits to clean off sinks, showers, tub and toilets.



***In the Kitchen:*** Dishes will clean up more easily, and be spot-free, without the gray film glass gets when etched by mineral laden wear. Plus hands will feel softer and look better.



***In the Laundry:*** Clothes will be softer, cleaner, whiter and brighter, and last longer. Using soft water and pure soap products increases the life of clothing, towels and linens up to 33%. Without hard water service issues, washing machines will last longer, too.



***Plumbing and Appliances:*** Appliances that use water will last longer and run better. Why? Because water heaters, washing machines and dishwashers using hard water can wear out 30% faster.

*Over time, soft water savings can really add up. For instance, conditioned water not only delivers greater washing power, it reduces the amount of soap you need to use by up to 70%. In fact, the Bureau of Statistics found that between 17 and 20.8 cents of every dollar are spent on cleaning products. Soft water can reduce that bill by up to 65%. It can also eliminate extra rinse cycles and hot water. Plus using less detergent, household cleaners and chemicals is better for the environment.*



# 2510 Series Softeners

Nelsen Water Treatment Solutions water conditioners and filtration products have been providing homeowners with the best water treatment solutions for more than 60 years. Working with the professional water treatment dealer, your new Nelsen water treatment system will fit your exact needs and provide you with years of quality, conditioned water.

## *The Fleck Brand 2510 Control Valve*

The Fleck 2510 control valve has been engineered and tested to withstand the equivalent of 27 years of uninterrupted daily use. The key to the exceptional quality of the Fleck 2510 control valve is the proven piston-seal-spacer technology.

Featuring a hydraulically balanced, Teflon-coated piston with a seal and spacer to effectively control service flow and regeneration, the Fleck 2510 valve is simply one of the most reliable valves available.

## *The State-Of-The-Art 2510 SXT Electronic Meter Control*

The 2510 SXT Electronic Meter Control provides your home with conditioned water based on your family's water usage, regenerating only when needed. This environment-friendly control ensures you years of soft water; saving you money, water and regenerant.

*2510 SXT Electronic  
Meter Control*



## *Additional Features Include:* Demand-initiated regeneration;

a control meter measures your water usage ensuring the maximum capacity and efficiency for your system. In the event of a power failure, program memory stores timer settings without batteries. Advanced programming options including up to

Six Independently Adjustable Cycle Times. Guest regeneration button to easily initiate a manual regeneration. Calendar override automatically regenerates the system at a time interval you select if usage hasn't initiated a regeneration.

*2510 Time Clock Control  
Shown on Softener*



## *The Time-Tested 2510 Mechanical Meter Control*

The 2510 Mechanical Meter Control features an economical water meter engineered to monitor your family's daily water usage, regenerating your system only when needed. Fleck's time-tested mechanical meter will provide years of trouble-free service.

## *The Economic 2510 Time Clock Control*

The economic 2510 Time Clock Control is as simple to set as turning a dial.

## *Additional Features of the Nelsen Brand Water Conditioning Systems*

High quality, cation water softener exchange resin. Tough, high density, polyethylene salt storage tank. Additional features available to match any decor. Electricity cost per month is approximately .29 cents\*.



*2510 Mechanical Meter Control  
Shown with Optional Bypass*

\* Based on one regeneration per week at \$0.11763/KWH.



## 2510 Series Filters

# Whole House Filtration

Iron, tastes and odors, hydrogen sulfide (sulphur), manganese, acid water conditions, etc. all contribute to water quality problems. Nelsen brand water filtration systems have been providing homeowners with the best water treatment solutions for more than 60 years. Working with the professional water treatment dealer, your new Nelsen water treatment system will fit your exact needs and provide you with years of quality, conditioned water.

Nelsen Brand, whole home water filter systems reduce these substances in your water:

Iron, Rust, Hydrogen Sulfide - Rotten Egg Odor  
Sediment, Excess Chlorine Odor, Manganese, Arsenic

*Nelsen Water Treatment Solutions* also offers a complete line of drinking water equipment. Combining these systems with Nelsen brand water filters and softeners provides your family with pure, fresh water right at your kitchen tap. Ask your professional water treatment dealer for a recommendation.



*Distributed by:*